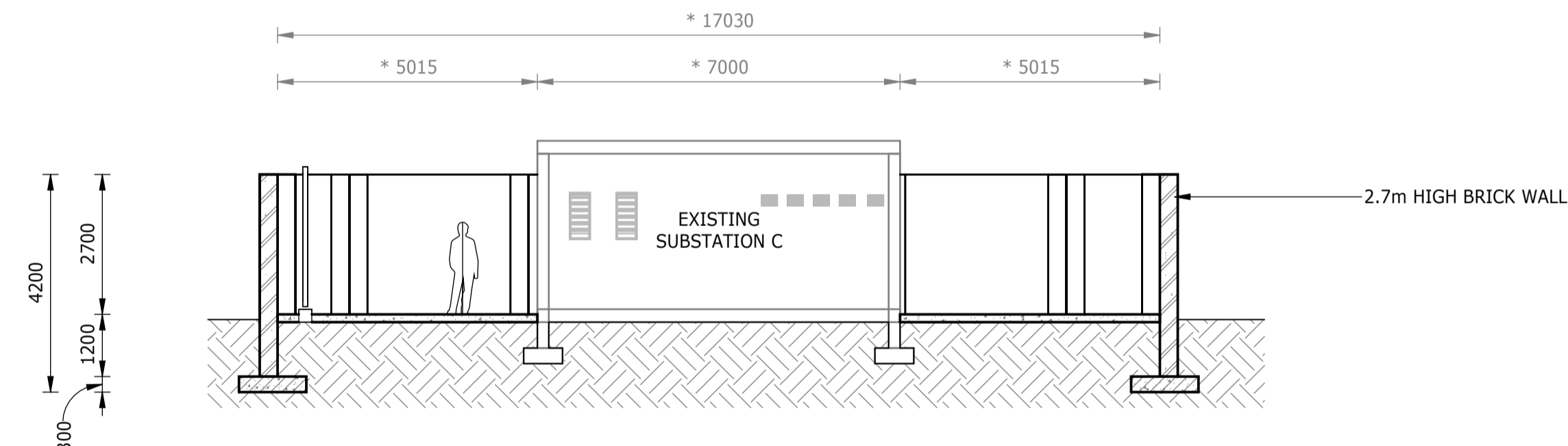
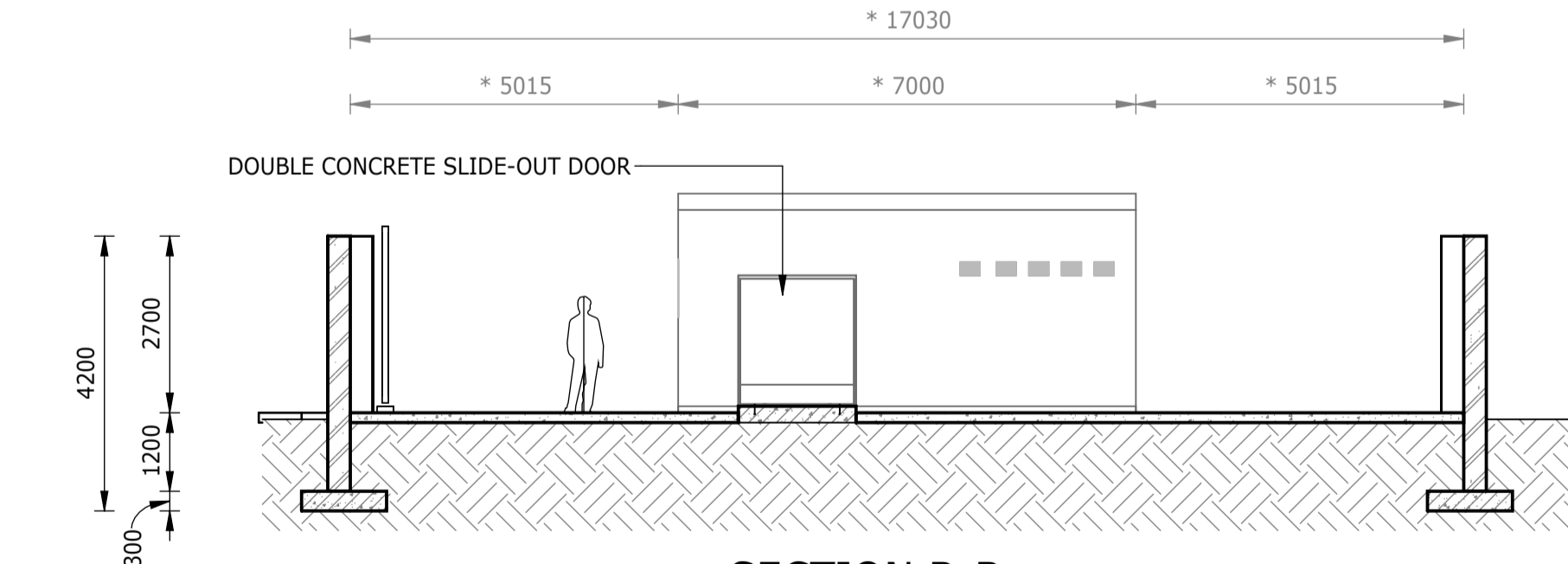


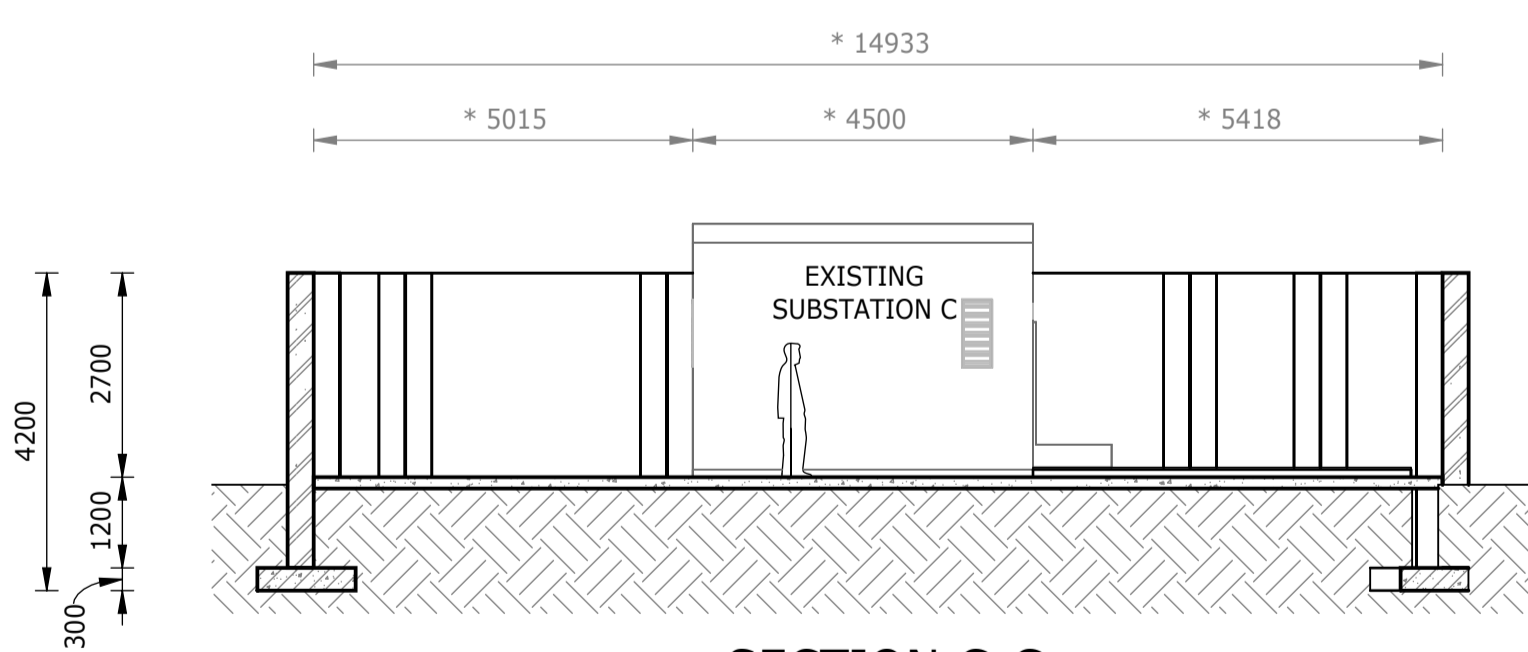
PLAN VIEW SUBSTATION C  
1 : 100



SECTION A-A  
1 : 100



SECTION B-B  
1 : 100



SECTION C-C  
1 : 100






PLAN VIEW SUBSTATION C  
1 : 250

- NOTES:**
1. ALL DIMENSIONS AND LEVELS CONTAINING \* ARE TO BE CONFIRMED ON SITE PRIOR TO COMMENCEMENT OF WORK. ANY DISCREPANCIES ARE TO BE REPORTED TO THE ENGINEER IMMEDIATELY.
  2. SETTING-OUT DETAILS TO BE CONFIRMED ONCE THE ENGINEER IS IN RECEIPT OF THE CONTRACTORS SURVEYS (BOTH GPR AND TOPOGRAPHICAL).
  3. CONSTRUCTION ACTIVITIES TO ENSURE NO DAMAGE TO EXISTING INFRASTRUCTURE. METHOD STATEMENTS REQUIRED PRIOR TO COMMENCEMENT OF SUCH ACTIVITIES.
  4. SEE DRAWING BW1400-RHD-C1-06-D-C-0601 FOR PERIMETER WALL DETAIL.
  5. SEE DRAWING BW1400-RHD-C1-12-D-C-1201 FOR TYPICAL PAVEMENT DETAILS.



EXISTING SUBSTATION C



CONSULTING ENGINEERS			JOHANNESBURG WATER (SOC) LTD		CITY OF JOHANNESBURG		DESIGN MANAGER	SCALE	AMENDMENTS		APPROVED	DATE	DRAWING No.				
 <div>Royal HaskoningDHV <i>Enhancing Society Together</i></div>	Building No. 5 Country Club Estate 21 Woodlands Drive Woodmead 2191 PO Box 867 Gallo Manor 2052  Tel No. +27 11 798 6000	SURVEYED		 <div>Johannesburg Water</div>	TURBINE HALL 65 NTEMI PILISO STREET NEWTOWN EGOLI 2001  TEL: (011) 688-1400 FAX: (011) 688-1529	OLIFANTSVLEI WWTW: CONTRACT 1  INFRASTRUCTURE RENEWAL PLAN  GENERAL LAYOUT OF SUBSTATION C			AS SHOWN	C01	ISSUED FOR TENDER	D. PHOGOLE	FEB 25	JW NUMBER			
		DESIGNED	L. NAICKER									JW14466-RHD-C1-07-D-C-0701					
		DRAWN	N. O'GORMAN									CONSULTANT'S NUMBER					
		CHECKED	L. NAICKER									BW1400-RHD-C1-07-D-C-0701					
		SERVICES CHECKED										FILE No					
		GEOTECHNICAL INVESTIGATION															
		SERVITUDES															
		APPROVED	DITHOLO PHOGOLE									DATE	C01				
Pr. Eng.No.	20060098																
DATE	25 February 2025																